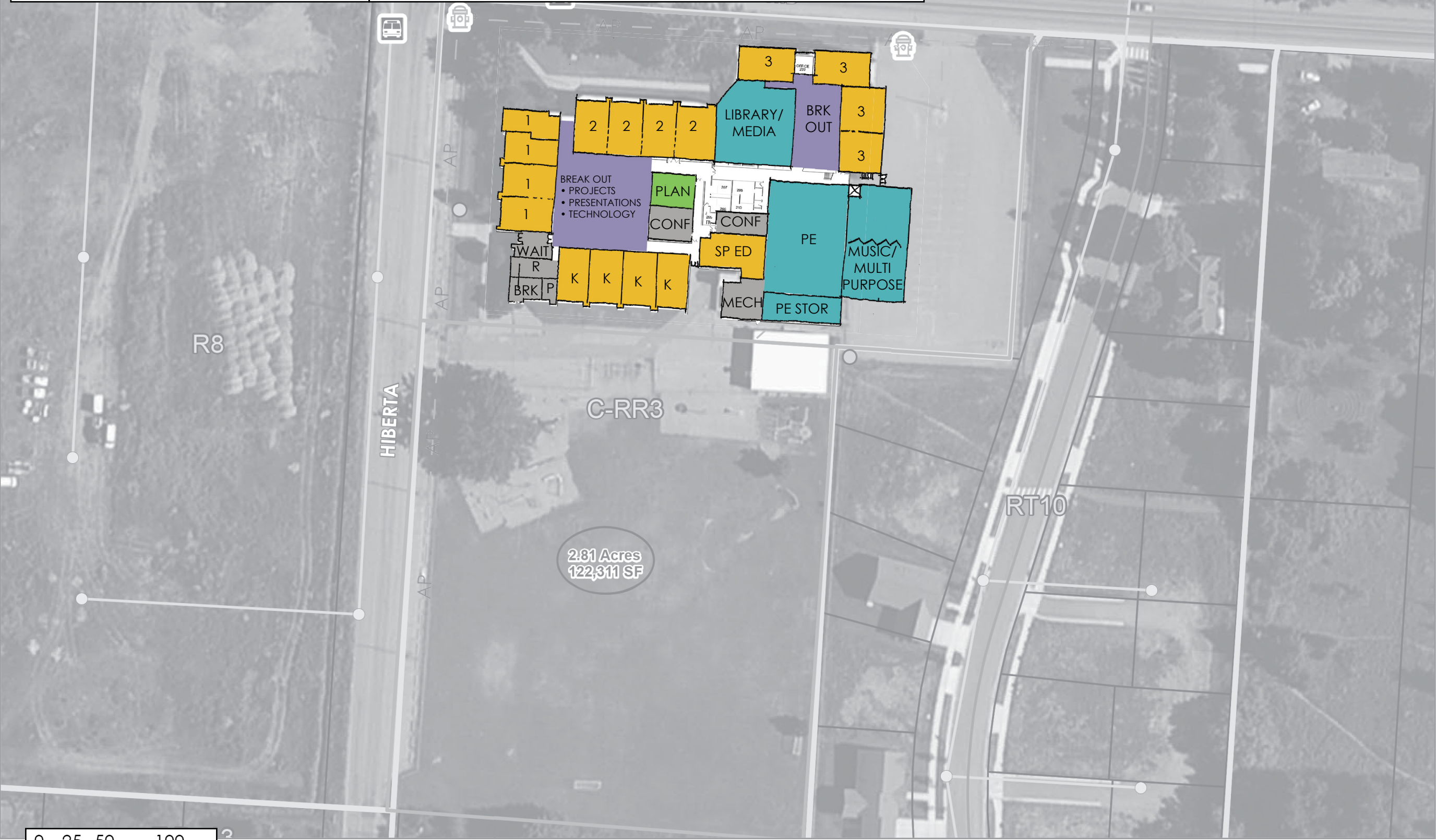


# HAWTHORNE

## Option E.1 - Expand

- Reconfigure entry
- Convert library/media to break out space for projects, technology & presentations for K-2
- Relocate Library/Media
- Expand school to east for Multipurpose and classroom space
- Install elevator serving gymnasium and second floor



**Hawthorne**  
Site Area: 5.42 acres  
Parking Spaces: 100

**Building Square Footage**  
Existing 50,045  
New 7,000

**Total Project Cost**  
\$5,652,855

**Replacement Cost**  
\$12,838,108

**Ratio** 44%  
Good  
Fair  
Poor  
Replace

**Remaining Deferred  
Maintenance & Energy  
Project Costs**  
\$0

**Current Annual Energy  
Costs**  
\$0

**Potential Energy Savings**  
\$0

**Rental/Lease/Sale Income**  
None

**Current Enrollment** 370  
**Future Peak Enrollment** 434

**Capacity** 450-500  
**Accessible Capacity** 450-500

**Accessible/Permanent  
Capacity** 450-500

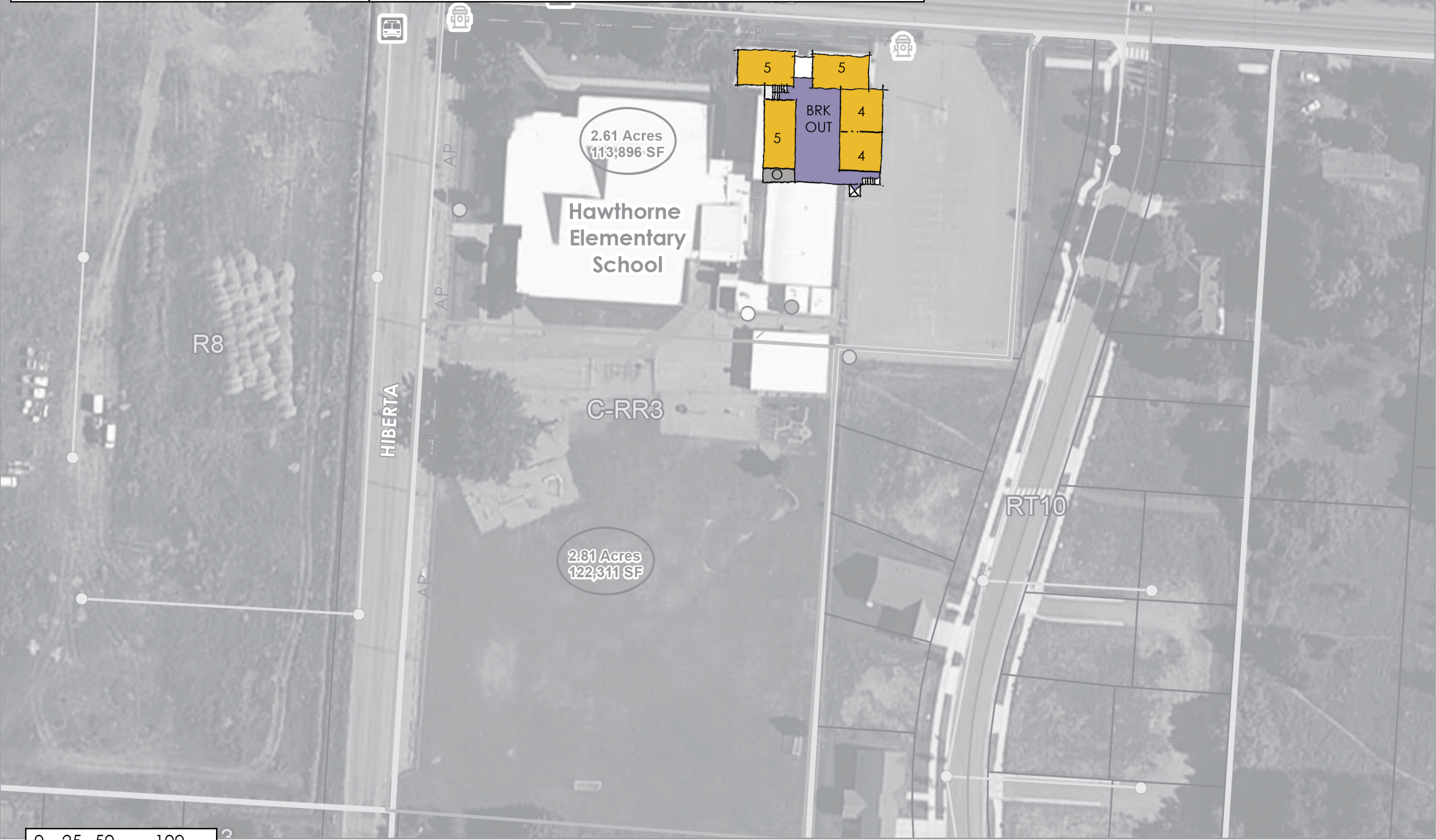
Costs include construction, demolition (where applicable), technology, furnishings, site development, design fees, site acquisition (where applicable), contingency and escalation to January 2020



# HAWTHORNE

## Option E.1 - Expand

- Reconfigure entry
- Convert library/media to break out space for projects, technology & presentations for K-2
- Relocate Library/Media
- Expand school to east for Multipurpose and classroom space
- Install elevator serving gymnasium and second floor



### Hawthorne

Site Area: 5.42 acres

Parking Spaces: 100

### Building Square Footage

Existing	50,045
New	7,000

**Total Project Cost**  
\$5,652,855

**Replacement Cost**  
\$12,838,108

**Ratio** 44%

Good  
Fair  
Poor  
Replace

**Remaining Deferred  
Maintenance & Energy  
Project Costs**  
\$0

**Current Annual Energy  
Costs**  
\$0

**Potential Energy Savings**  
\$0

**Rental/Lease/Sale Income**  
None

**Current Enrollment** 370  
**Future Peak Enrollment** 434

**Capacity** 450-500  
**Accessible Capacity** 450-500

**Accessible/Permanent  
Capacity** 450-500

Costs include construction, demolition (where applicable), technology, furnishings, site development, design fees, site acquisition (where applicable), contingency and escalation to January 2020